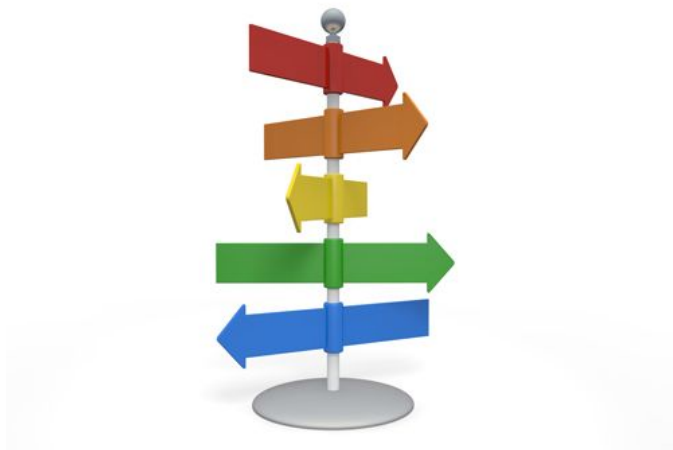


# Unit 4: Giving Directions and Traveling

GECO Level C  
4/10/21

# Objectives

- I will be able to use **prepositions of place**
- I will be able to form **Wh-questions** to ask for directions
- I will be able to use **simple present** to ask for directions
- I will be able to use **imperatives** to ask for directions



# Agenda

- Warm up
- Tips for asking directions
- Grammar lesson (prepositions of place, wh-questions, imperatives)
- Giving directions in English
- Map activity
- Dialogue activity
- Scenario creating activity
- Grammar review
- Homework

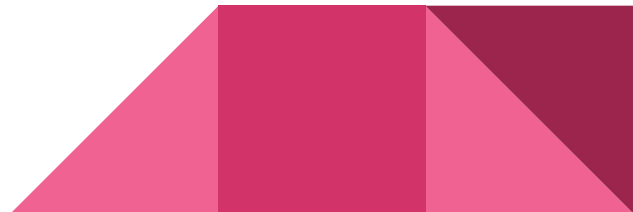


# Warm up

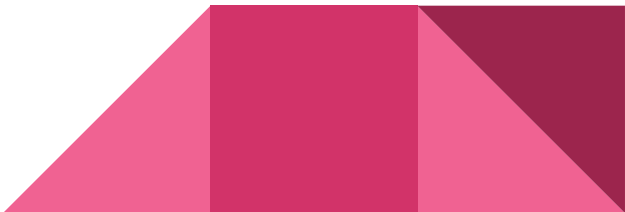
- How do you ask for directions in your home country? Do you use maps/phone apps? Do you ask people?
- What is your experience with giving/receiving directions in the US? How is it similar/different than your home country?
- How do you ask questions when traveling/going on a vacation?



GIVING AND ASKING FOR  
DIRECTIONS



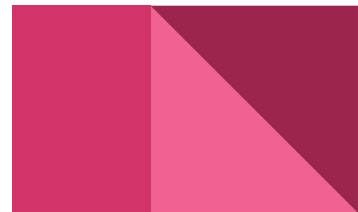
# tips to ask for directions

- Be as detailed and precise as possible
  - Use greetings and polite expressions (Hello! Good Afternoon!, Excuse me could you help me?)
  - Modal verbs will help you express yourself (may I ask you, could you help me?)
  - Build your vocabulary (specific landmarks and buildings, be aware of location)
  - Know how to ask a question (how, where, which)
  - Get to know the local transportation (buses, trains, Ubers, subway)
  - Learn commonly used prepositions of place
  - Use imperatives
- 

# Prepositions of Place

- ❑ **Prepositions** are usually in front of nouns or pronouns and they show the relationship between the noun or pronoun and words in a sentence.
- ❑ **Preposition of place** is a preposition which is used to refer to a place where something or someone is located.

Next to	In front of
Across from	Near
Inside	By
Behind	Between
On	Beside



# Simple present

## Simple Present Tense

### Definition:

- A verb **tense** that expresses action in the present time, habitual actions, or general truths.

### Example :

- Expresses action in the habitual  
Prabu *Walks* to school every day
- Expresses general truth  
The sun *rises* in the east
- Expresses action in general time  
I work in a factory

# Imperative form

- You should use the **imperative form** when asking for questions
- Comprised of **verb** without the subject, and it tells someone **directly what to do**
- The imperative form is **appropriate when asking for guidance**
- Examples:

**Continue** going straight.

**Take** the next exit heading west.

**Go** north towards the hospital.





## Common phrases to give directions (imperatives)

- **Go** straight
- **Turn** back
- **Turn** left
- **Turn** Right
- **Go** under the bridge
- **Go** over the bridge
- **Go** back
- **Go** along
- **Cross**
- At the end
- Just around the corner
- The easiest way is to...
- The quickest way is to...
- The best way is to...

## IMPERATIVES - GIVING DIRECTIONS

1.- Match the beginnings with the endings.

Take

The restaurant is around

The train station is across

The taxi stand is

Walk

The bank is next to the

on the right.

to the bookstore.

pharmacy.

the street.

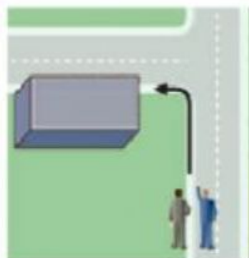
the corner.

the bus.

## 2.- Select the best answer for each question.

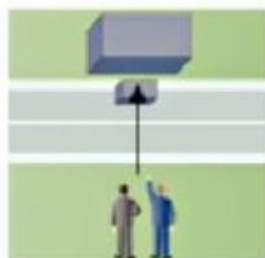
The pharmacy is \_\_\_\_.

- ☐ down the street
- ☐ across the street
- ☐ around the corner
- ☐ on the left



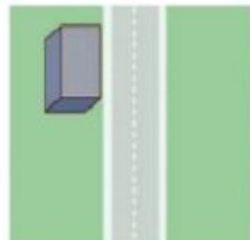
The restaurant is \_\_\_\_.

- ☐ around the corner
- ☐ on the left
- ☐ down the street
- ☐ across the street



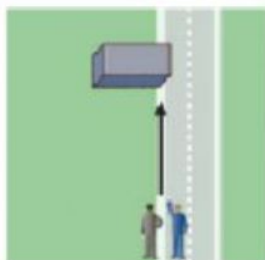
The bookstore is \_\_\_\_.

- ☐ around the corner
- ☐ down the street
- ☐ on the left
- ☐ across the street




The bank is \_\_\_\_.


- ☐ across the street
- ☐ around the corner
- ☐ down the street
- ☐ on the right



# Asking for directions in English

1. **How do I get to** the fire station?
  2. **What's the best way to** get to the grocery store?
  3. **Where is** the church?
  4. **Could you tell me where** the hardware store is?
  5. **Do you know where** the post office is?
  6. **Where can I find** the nearest coffee shop?
  7. **Is there a** clothing store here?
  8. **I am looking for** the elementary school.
  9. **I am looking for** the broadband store.
- 

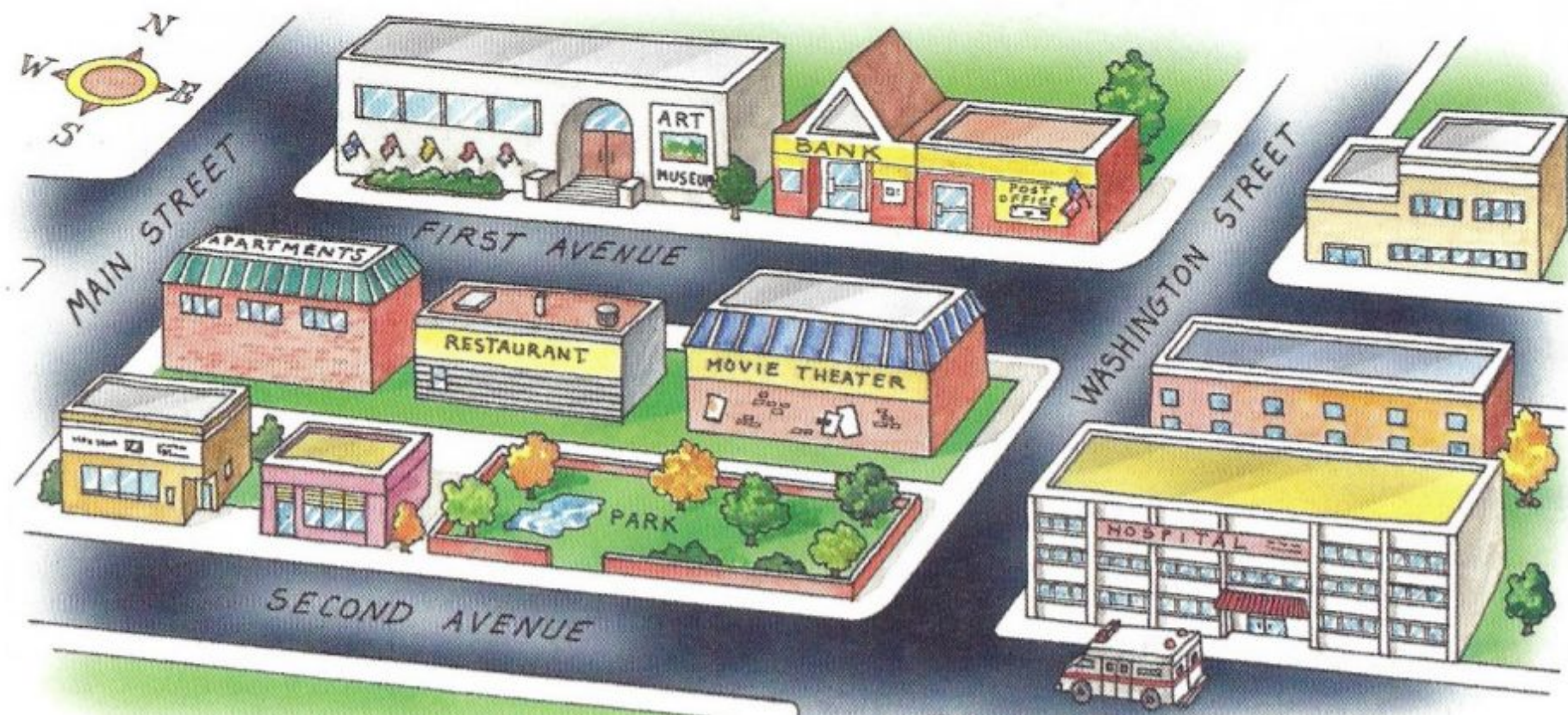
# Giving directions in English (imperatives)

1. The fire station is on the main street.
  2. The grocery store is around the corner.
  3. Go south for three blocks.
  4. The hardware store is on the main avenue.
  5. Go straight for five miles.
  6. The post office is at the end of main street.
  7. Turn left on main street to find the coffee shop.
  8. Go under the bridge and turn right to find the clothing store.
  9. The best way to get to the hospital is to turn left on main street and take main avenue.
- 

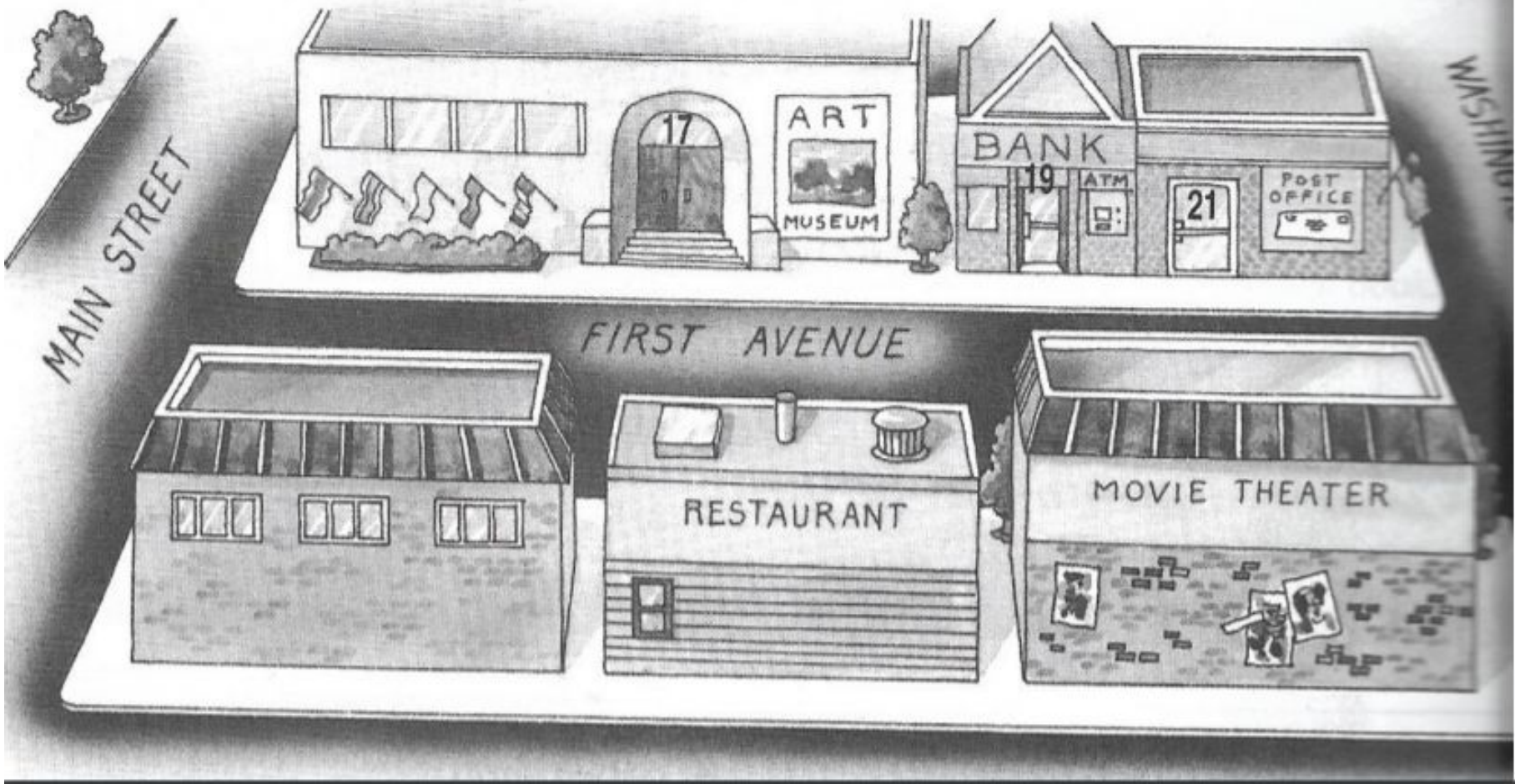
# Giving Directions in English (imperatives)

1. **Go straight on. Take the second right on 1st street. Go under the bridge and it's the first building to the right of the bank.**
2. **Go straight on. Cross the intersection and continue straight for one mile. Turn left onto main avenue and it's the building at the end of the plaza.**
3. **Go straight on. Pass the hardware store on the corner of 1st street, and take a left on to Main avenue. It's the building in between the coffee shop and the church.**









MAIN STREET

FIRST AVENUE

WASHINGTON

ART  
MUSEUM

BANK

ATM

POST  
OFFICE

RESTAURANT

MOVIE THEATER



# Dialogue

## Scenarios for asking and giving directions

- **First scenario:** asking directions to a gas station

<https://docs.google.com/document/d/1x6yj4ijjButBPogjiV-LjtEmT3GRZsDwh4XlitLAXNM/edit>

- **Second scenario:** asking for directions by phone call to get to conference

<https://docs.google.com/document/d/1v1OmGKbfnPQ-8dUMFN8531OjmU7ug6dbFFQ48k7kmaQ/edit>



# Create your own scenarios

Create your own scenarios, giving and asking directions using the vocabulary

**Using the Student A and Student B format for the conversation**

- **Question forms:** how do I get to, **What's** the best way to, **where** is, **could you** tell me where, **do you know** where, **where can** I find, **is there** a, I am looking for
- **Imperatives:** go straight, turn back, turn right, go back, go along, cross, go under the bridge, go over the bridge etc.
- [https://docs.google.com/document/d/1N7bS7AEvPDaB\\_kdS-b-cwrMgrEdsrM\\_Izak4avJ3jI8/edit](https://docs.google.com/document/d/1N7bS7AEvPDaB_kdS-b-cwrMgrEdsrM_Izak4avJ3jI8/edit)

# Review

- Prepositions of Place
- Wh-questions
- Simple present tense
- Imperatives (Go, turn, cross)

Next to	In front of
Across from	Near
Inside	By
Behind	Between
On	Beside

## Simple Present Tense

### Definition:

- A verb **tense** that expresses action in the present time, habitual actions, or general truths.

### Example :

- Expresses action in the habitual  
Prabu *Walks* to school every day
- Expresses general truth  
The sun *rises* in the east
- Expresses action in general time  
I work in a factory

# Quiz/Homework

- What are **prepositions of place**?
- What are some common **imperatives** used when giving directions?
- What are some important **characteristics** to think about when giving directions? (important tips for giving directions)
- **Create your own giving directions scenario to use for next week**



# Reminders

WhatsApp

Tutoring link: 1-2 PM

<https://gonzaga.zoom.us/j/99693943458>



## Next Week... (April 17)

- Review grammar from previous week
- Spend time on traveling
- Role play/dialogue activities

