

Unit 4: Giving and taking directions

GECO • Level B

Unit 3

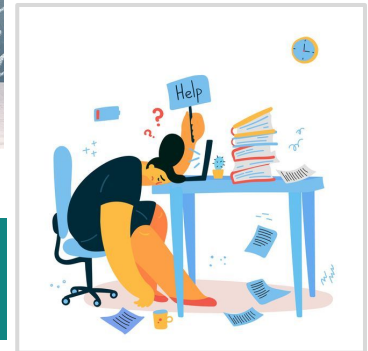
Review

What did we learn
last week?

1. Vocabulary

Type your answers in the chat box!!!

- Legitimate (adjective)
- Contagious (adjective)
- Unproductive (adjective)
- Burned out (adjective)



2. What are legitimate reasons for calling in sick?

Type your answers in the chat box!!!

Good reasons

- Contagious illness
- Mental health issue
- Family members
- Severe weather
- Loss of loved one

Lame reasons

- Baseball opening day
- beach/ golf course
- Annoying weather
- Job is boring

3. HOMEWORK from last week

Create your own scenario.

Dear Mrs. Smith

Good morning Mrs. Smith hope you are well.

The reason of this email is to inform you that I won't be able to work in Walmart tomorrow. The reason is that I don't feel well, I'm a sick. I apologize for no be able to work.

Thanks

Sincerely,
Tahis Sanabria

Asking for & Giving Directions

Conversations 1

June: Excuse me! Can you tell me the way to the museum?

Mike: It's this way. Go straight ahead at the traffic lights. Turn right. Go along the street. Walk past the park, and keep going straight until you see the sign for the museum.

June: Great! Thanks for your help.

Mike: You're welcome.

Conversations 2

Kate: Excuse me! How do I get to the post office?

Mary: Sorry, I'm not from around here.

Kate: Do you know where the closest bank is?

Mary: If you cross the street, you'll find a bank there!

Kate: Thank you.

Mary: Don't mention it.

Conversations 3

Emily: Excuse me, I'm afraid I can't find a petrol station. Do you know where one is?

Bill: There's one near here.

Emily: How do I get there?

Bill: At the bus stop, take the first right and go straight on. It's opposite the shopping mall.

Emily: Thank you so much!

Conversations 4

Rose: Excuse me! Is there a hospital near here?

Jack: Yes, there's one near here.

Rose: How far is it to the hospital?

Jack: It's not far, maybe about 200 yards.

Rose: Could you please guide me?

Jack: It's that way. Go straight ahead. Take a right at the junction. This straight road will lead you to the hospital.

Let's practice!

1. Listen to the 2 scenarios.
2. Write down phrases you can use to **ask** directions
3. Write down phrases you can use to **give** directions

Questions:

- Can you tell me the way to the museum?
- Excuse me, how to I get to the post office?
- Do you know if there is a bank nearby?

Responses:

- Go straight ahead past the traffic lights.
- Turn right.
- Walk across the street.
- Walk past the park.
- Keep going straight.
- Go across the street, you'll find a bank there.

What helpful phrases did you hear?

Asking for Directions

You are looking
for **a bank**.

How do you **ask**
for directions?

Tell us in the chat!



A background image of a beach at sunset. The sky is a warm orange-yellow, and the ocean has gentle waves. A large, dark rock formation is visible on the left side of the frame. The foreground shows the wet sand of the beach with some footprints.

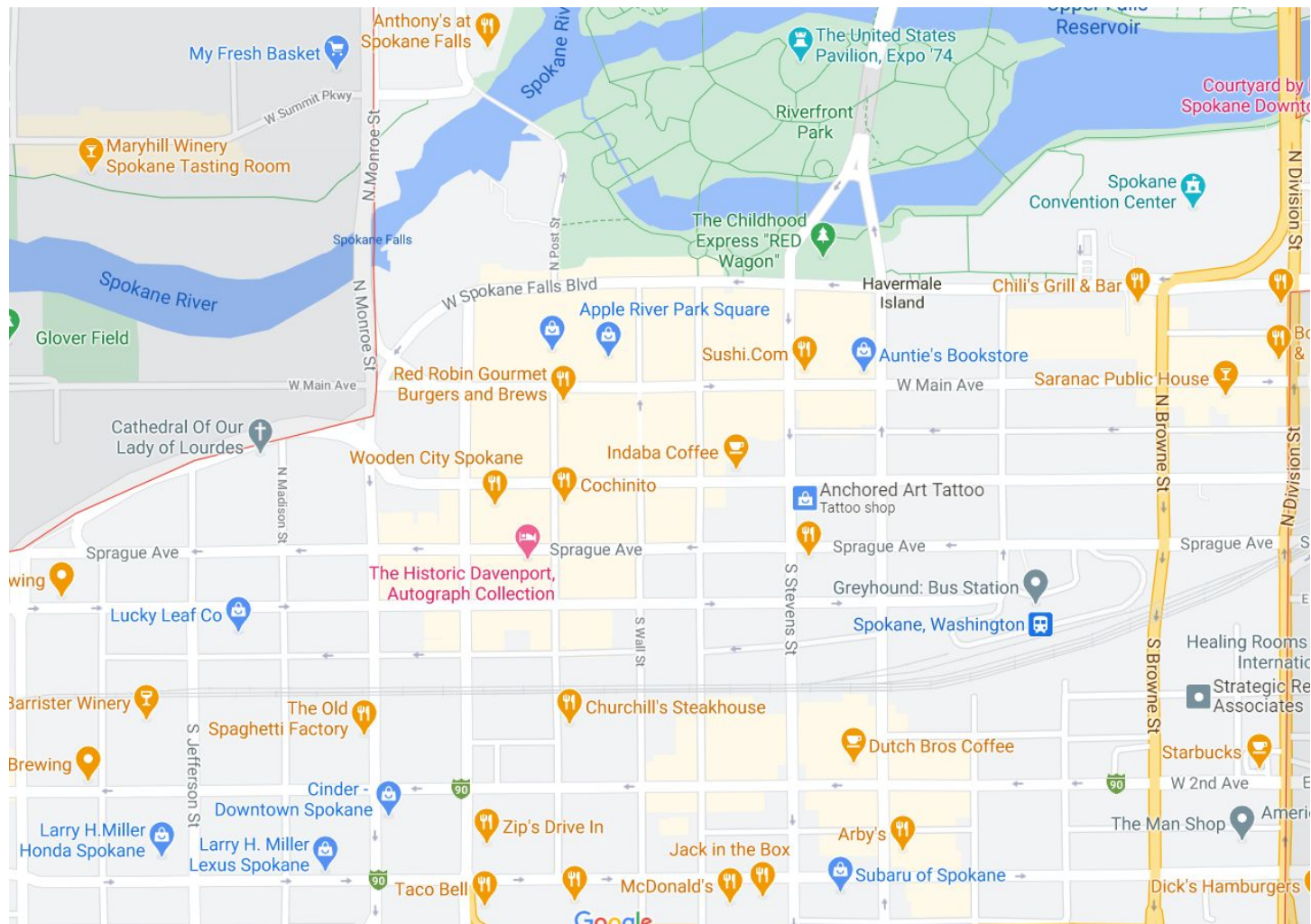
Helpful phrases for asking directions


- *Could you tell me how to get to...?*
- *How do I find...?*
- *Could you direct me to...?*
- *How do I get to...?*
- *Where is...?*
- *Can you tell me the way to...?*
- *Excuse me, could you tell me how to get to the bus station?*
- *I'm looking for this address.*
- *Are we on the right road for...?*
- *Do you have a map?*

Work together! Create 3 questions for directions in Spokane



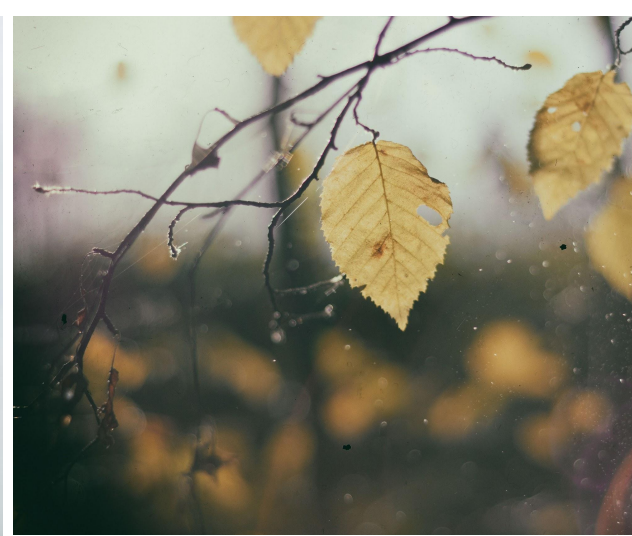
https://docs.google.com/forms/d/e/1FAIpOLSeqobIaOdwbuOLf18gGDodPrtoC8BvU5PjCxSzcT97TxVn_Ig/viewform?usp=sf_link



A photograph of the Golden Gate Bridge in San Francisco, partially obscured by a thick layer of fog. The bridge's iconic red-orange towers and suspension cables are visible on the left, extending into the misty distance. The water below is a deep blue-green, and the sky is a pale, overcast grey.

If someone asks for
directions...

How do you
answer?




Let's practice answering...

In small groups, we will answer the questions on this worksheet.

Use the attached map and see how it goes answering the questions as well as asking them.

Asking for and Giving Directions



1. How do I get from high school to the train station?

2. How do I get from the movie theater to the park?

How do I get from the hospital to David's house?

3. How do I get to the government building from the flower shop?

4. How do I get from pc bang to the Korean restaurant?

5. How do I get from the bus station to the hospital?

6. How do I get from the train station to the church?

© iStockphoto.com

Homework:

<https://flipgrid.com/e06c3491>

Summer Session!

Come to tutoring!! <https://gonzaga.zoom.us/j/99693943458>